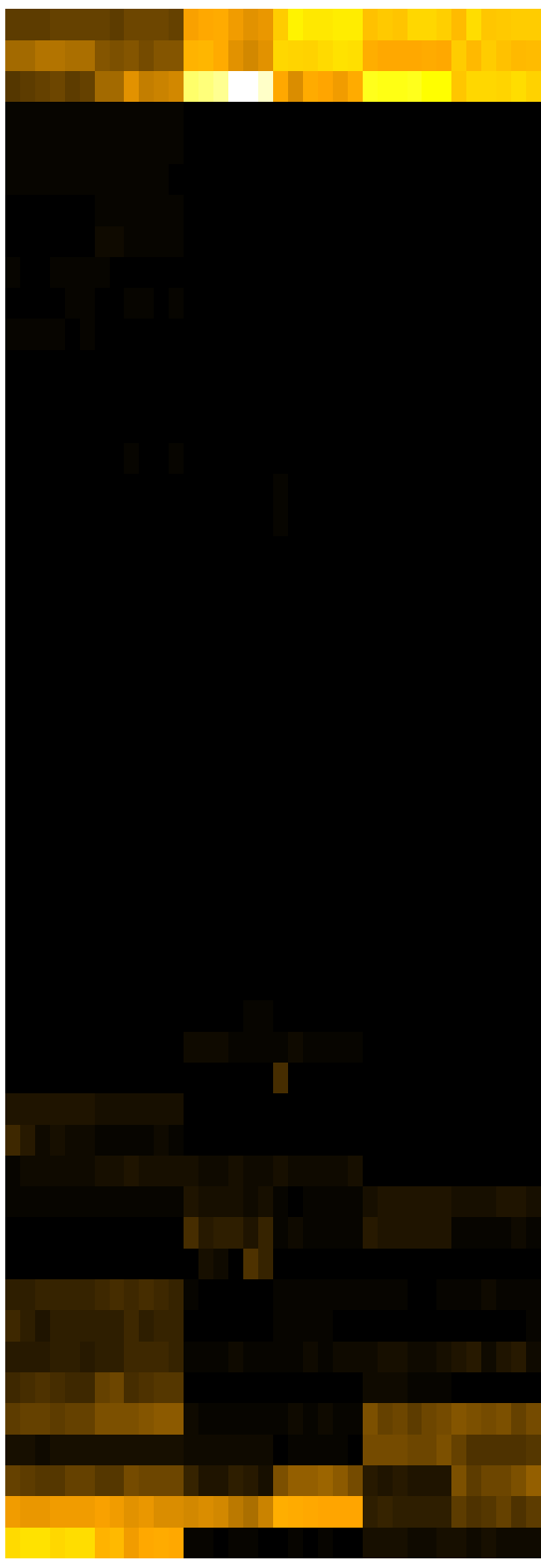
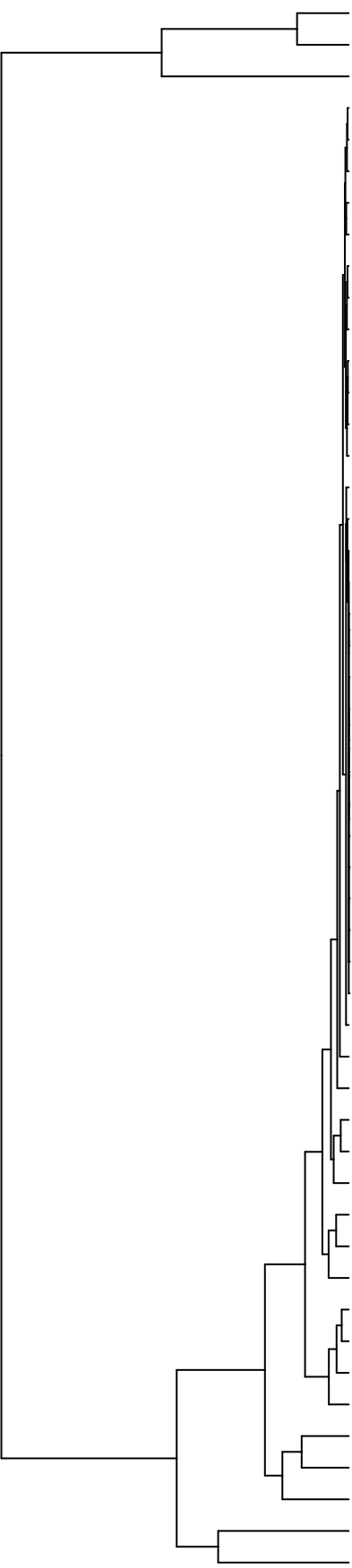


Group003  
 Saliva -PMA  
 Baseline -PMA



Haemophilus  
 Veillonella  
 Neisseria  
 Saccharibacteria\_(TM7)\_[G-1]  
 Catonella  
 Actinomyces  
 Solobacterium  
 Absconditabacteria\_(SR1)\_[G-1]  
 Stomatobaculum  
 Lachnoanaerobaculum  
 Saccharibacteria\_(TM7)\_[G-6]  
 Riemerella  
 Lautropia  
 Lancefieldella  
 Capnocytophaga  
 Klebsiella  
 Raoultella  
 Staphylococcus  
 Phyllobacterium  
 Acinetobacter  
 Cutibacterium  
 Novosphingobium  
 Delftia  
 Acidovorax  
 Pseudomonas  
 Serratia  
 Leifsonia  
 Agrobacterium  
 Sphingobium  
 Microbacterium  
 Siccationidurans  
 Saccharibacteria\_(TM7)\_[G-5]  
 Salmonella  
 Eikenella  
 Enterobacter  
 Oribacterium  
 Lachnospiraceae\_[G-2]  
 Granulicatella  
 Gemella  
 Aggregatibacter  
 Citrobacter  
 Schaalia  
 Leptotrichia  
 Rothia  
 Alloprevotella  
 Porphyromonas  
 Campylobacter  
 Fusobacterium  
 Streptococcus  
 Prevotella

F28914\_S018  
 F28914\_S017  
 F28914\_S013  
 F28914\_S014  
 F28914\_S016  
 F28914\_S015  
 F28914\_S004  
 F28914\_S002  
 F28914\_S006  
 F28914\_S005  
 F28914\_S003  
 F28914\_S001  
 F28914\_S029  
 F28914\_S030  
 F28914\_S026  
 F28914\_S028  
 F28914\_S027  
 F28914\_S025  
 F28914\_S053  
 F28914\_S052  
 F28914\_S054  
 F28914\_S050  
 F28914\_S051  
 F28914\_S049  
 F28914\_S041  
 F28914\_S037  
 F28914\_S040  
 F28914\_S039  
 F28914\_S042  
 F28914\_S032  
 F28914\_S036  
 F28914\_S061  
 F28914\_S066  
 F28914\_S063  
 F28914\_S062  
 F28914\_S065  
 F28914\_S064

Samples

Genus